

# Discover Your Future in Care



In Partnership With



Information Pack

---

# Your Future in Health and Social Care

Care homes are vibrant communities where skilled, compassionate professionals make a real difference every day.

We have teamed up with the Royal College of Nursing to produce this short guide to career options for nursing in care.

If you are working with students who are exploring future career paths, a visit during Care Home Open Week 2026 is the perfect way to discover opportunities in health and social care.



---

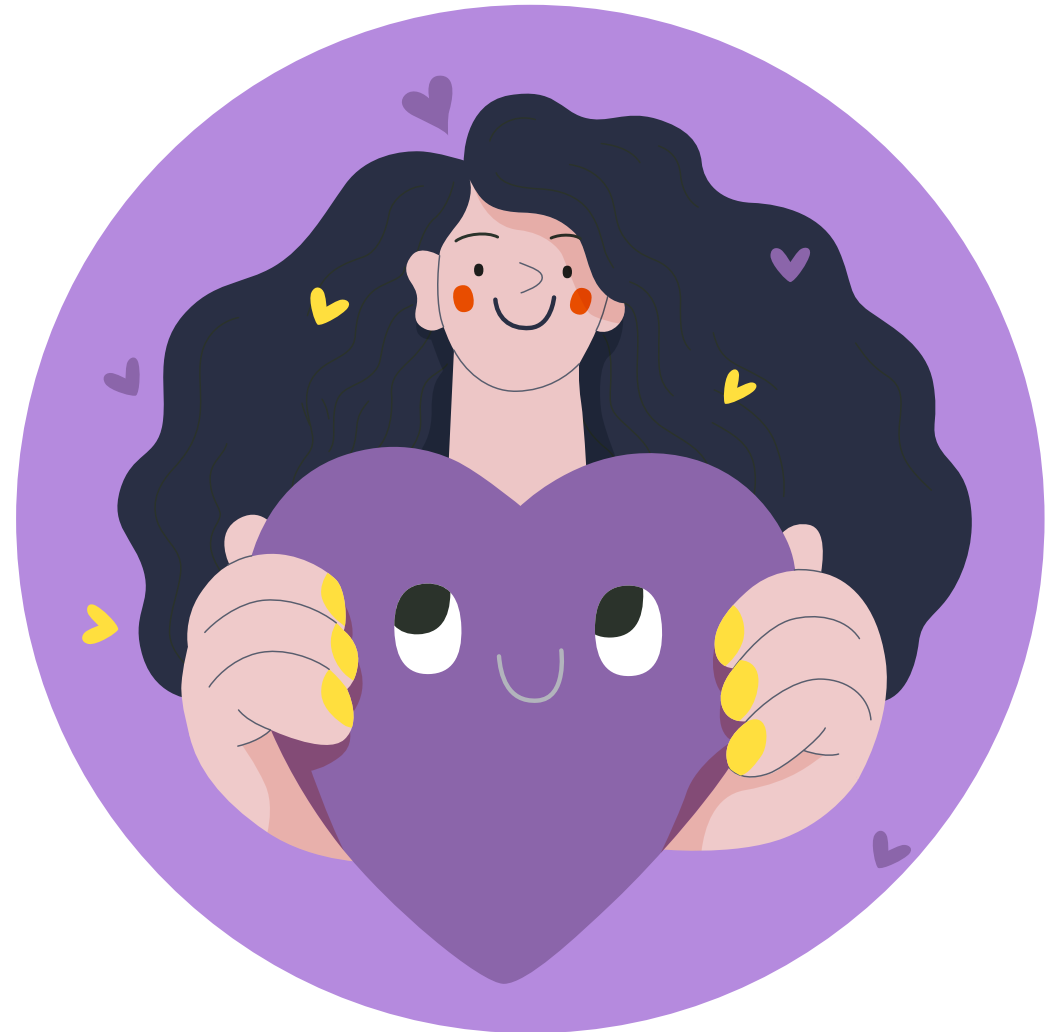
# Why Explore a Career in Care?

Care settings offer **diverse, rewarding roles** beyond the NHS, supporting people of all ages with physical, mental, emotional, or social needs. These services work alongside the NHS to deliver holistic care that truly changes lives.

## Examples include:

- Care homes and residential settings
- Hospices providing compassionate end of life care
- Mental health services
- Services for people with learning disabilities or autism
- Community and home care services

These environments help you build confidence, develop specialist skills, and shape a career that reflects your passions.



---

# What You Can Learn During a Visit

**Visiting a care home gives students the chance to:**

## Meet the Team

Talk to nurses, carers, activity coordinators, and support staff. Learn what motivates them and what a typical day looks like in a person centred environment.

## Experience the Setting

Discover how care services support wellbeing—physically, mentally, emotionally, and socially—often working hand in hand with NHS teams.

## Understand the Variety of Roles

**There are roles in:**

- Nursing
- Activities and wellbeing
- Healthcare assistance
- Specialist support
- Administration and leadership

These careers provide excellent transferable skills and countless progression opportunities.

---

## Myth Busting: Careers in Care

Many students believe they can only pursue nursing careers in the NHS—but that's not true. Independent settings actively offer roles for early career nurses, including structured preceptorships and supportive development programmes.



---

# Why Students Should Get Involved

A visit can help students:

- Discover new career options they may never have considered
- Gain inspiration from skilled care professionals
- Understand how care homes contribute to the community
- Learn about routes into health and social care—including apprenticeships, nursing programmes, and on the job learning

For those curious about a career where they can make a real difference, care offers a creative, person centred path with huge potential.



---

# Join Us for Care Home Open Week 2026

We welcome school and college groups to book a visit and:

- Take part in interactive activities
- Meet residents and staff
- Learn about care careers
- See what compassionate, community-based care looks like in action centred path with huge potential.



---

# Let's Connect

To arrange a visit or request more information, please contact:

Three horizontal rounded rectangular input fields for contact information.

*We look forward to welcoming you!*

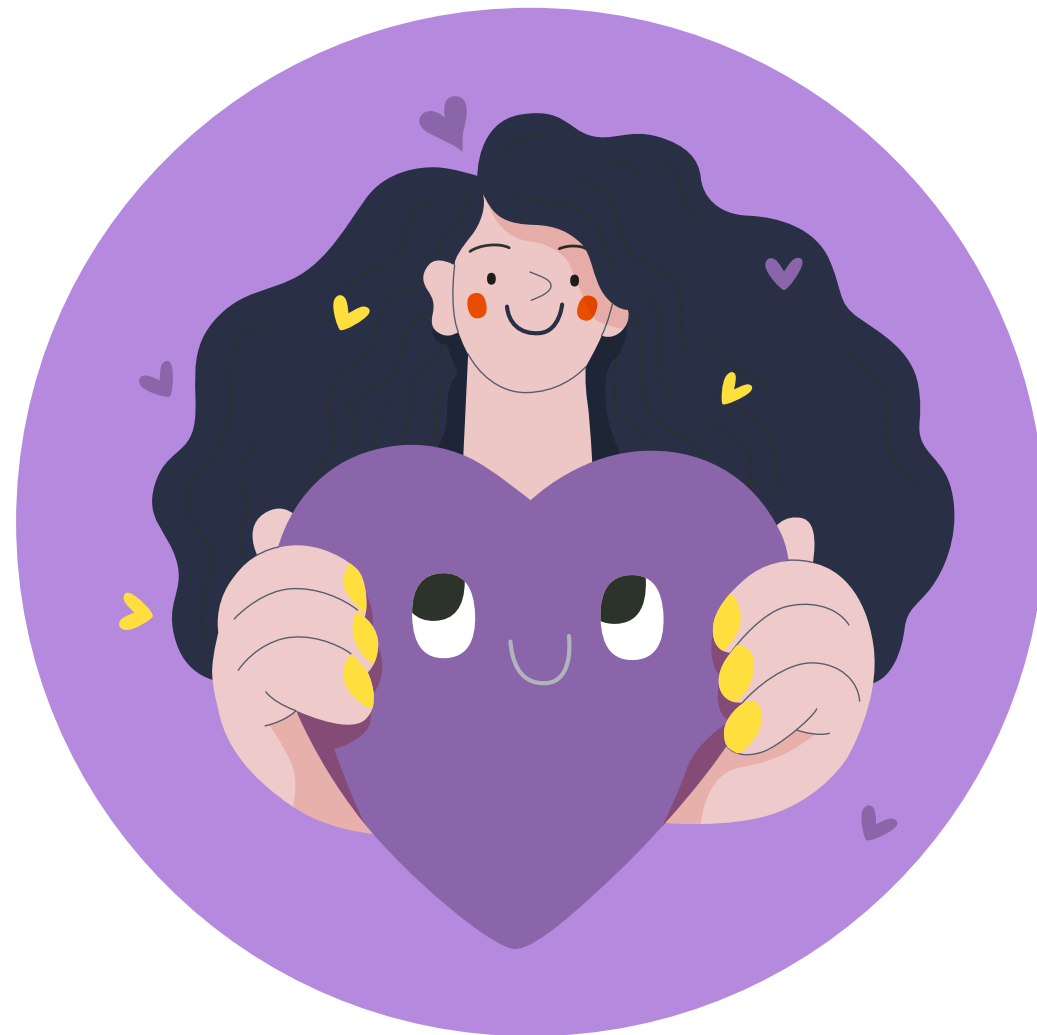


---

# Join the Royal College of Nursing

From your first day as a student nurse to retirement, the RCN is here to support every step of your nursing journey – so that you can focus on delivering exceptional care and fulfilling your potential. Access expert learning resources, career advice, financial guidance, wellbeing support and more.

[rcn.org.uk/join](https://rcn.org.uk/join)





# Care Home Open Week

15<sup>th</sup> – 21<sup>st</sup> June 2026

[www.championingsocialcare.org.uk](http://www.championingsocialcare.org.uk)



Supported by

